

Laminarinase 16A,
Paenibacillus sp.
PLam16A (GH16)

Catalogue number(s): CZ08611, 1 mg
CZ08612, 3 × 1 mg

Description

PLam16A (GH16), E.C. number 3.2.1.39, is an endo-1,3- β -glucanase from *Paenibacillus sp.*. Recombinant *PLam16A (GH16)*, purified from *Escherichia coli*, is a single domain family 16 Glycoside Hydrolase (GH16) (www.cazy.org). The enzyme is provided in 35 mM NaHepes buffer, pH 7.5, 750 mM NaCl, 200 mM imidazol, 3.5 mM CaCl₂, 0.02% sodium azide and 25% (v/v) glycerol, at a 1 mg/mL concentration. Bulk quantities of this product are available on request.

Electrophoretic Purity

PLam16A (GH16) purity was determined by sodium dodecyl sulfate polyacrylamide gel electrophoresis (SDS-PAGE) followed by BlueSafe staining (MB15201) (Figure 1).

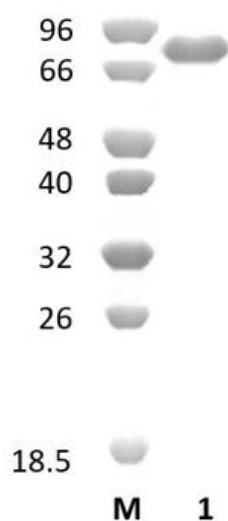


Figure 1. SDS-PAGE analysis of *PLam16A (GH16)* (Lane 1). Electrophoresis was performed using a 14% polyacrylamide gel. The Mw of the enzyme is 81,00 kDa. Lane M contains NZYTech Low Molecular Weight (LMW) Protein Marker (MB082).

Storage temperature

This enzyme is shipped at room temperature but should be stored at -20 °C.

Substrate specificity

PLam16A (GH16) hydrolyses 1,3- β -glucans such as laminarin and curdlan.

Temperature and pH optima

The pH optimum for enzymatic activity is 6,5 while temperature optimum is 37 °C.

Enzyme activity

Substrate specificity and kinetic properties of *PLam16A (GH16)* are as described in the reference provided below. Follow the instructions described in the paper for the implementation of enzyme assays and to obtain values of specific activity.

Reference

Unpublished

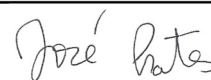
Quality control assay

Protein purity is >90% as judged by SDS-PAGE followed by BlueSafe staining (MB15201).

Certificate of Analysis

Test	Result
Enzyme purity	Pass

Approved by:



José Prates

Senior Manager, Quality Systems

Revised May/18

NZYTech Ltd
Estrada do Paço do Lumiar, 22
Campus do Lumiar, Edifício E, R/C
1649-038 Lisboa, Portugal
Tel.: +351 213643514
Fax: +351 217151168
www.nzytech.com