

## Xylanase 11A, *Clostridium thermocellum*

### CtXyn11A (GH11)

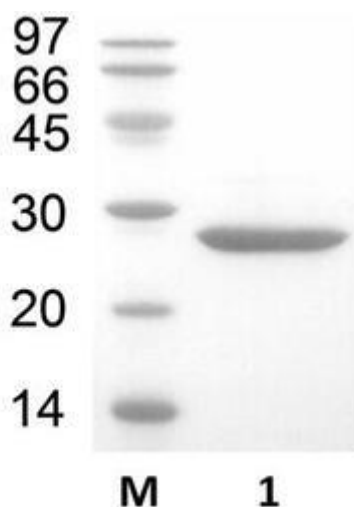
Catalogue number	Presentation
CZ00031	1 mg
CZ00032	3 x 1 mg

#### Description

Xylanase 11A (CtXyn11A), assigned the E.C. number 3.2.1.8, is a derivative of *Clostridium thermocellum*. It is an endo-1,4- $\beta$ -xylanase. The recombinant CtXyn11A, purified from *Escherichia coli*, is a single-domain Glycoside Hydrolase family 11 (GH11) enzyme (see more details at [www.cazy.org](http://www.cazy.org)). The protein is supplied in a solution containing 35 mM NaHepes buffer (pH 7.5), 750 mM NaCl, 200 mM Imidazole, 3.5 mM CaCl<sub>2</sub>, and 25% (v/v) glycerol, at a concentration of 1 mg/mL. Bulk quantities of this product can be made available upon request. To place an order, simply visit our website. We offer fast and secure shipping worldwide.

#### Electrophoretic Purity

The molecular integrity and purity of CtXyn11A (GH11) were evaluated using sodium dodecyl sulfate-polyacrylamide gel electrophoresis (SDS-PAGE), followed by BlueSafe staining (MB15201) (Figure 1).



**Figure 1.** SDS-PAGE analysis of CtXyn11A (GH11) was conducted in (Lane 1), employing a 14% polyacrylamide gel. The enzyme exhibits a band corresponding to a molecular weight of approximately 24,05 kDa. Lane M contains a Protein Marker for reference.

#### Storage temperature

The protein should be stored at -30°C to -15°C in a constant temperature freezer. The protein will remain stable till the expiry date if stored as specified.

#### Substrate specificity

CtXyn11A (GH11) hydrolyses xylans, such as oat spelt xylan and arabinoxylan, and has undetectable cellulase activity.

#### Temperature and pH optima

The enzyme exhibits optimal activity within a pH range of 5.0-8.0 and at a temperature of 75°C. Maximal enzymatic activity is achieved at pH 6.5 and a consistent temperature of 75°C.

### Specific activity

CtXyn11A (GH11) specific activity is 2800 U/mg, using wheat arabinoxylan as substrate.

### Enzyme activity

Substrate specificity and kinetic properties of CtXyn11A (GH11) are detailed in the referenced publication provided below. To perform enzyme assays and determine specific activity values, adhere to the methodology outlined in the cited paper(s).

### Reference

Fernandes *et al.* (1999) *Biochem. J.* 342, 105-111.

### Customer Support

Our dedicated customer support team is always ready to assist you with any questions or technical issues you may have. Reach us via email at [info@nzytech.com](mailto:info@nzytech.com).

### Quality control assay

Protein purity is determined to be  $\geq 90\%$ , as assessed by SDS-PAGE and subsequent BlueSafe staining (MB15201).

For life science research only. Not for use in diagnostic procedures.