

Cellulase 44A, *Clostridium thermocellum*

CtCel44A (GH44)

Catalogue number	Presentation
CZ00141	2 mg
CZ00142	3 x 2 mg

Description

Cellulase 44A (CtCel44A), assigned the E.C. number 3.2.1.4, is a derivative of *Clostridium thermocellum*. It is an endo-1,4- β -glucanase. The recombinant CtCel44A, purified from *Escherichia coli*, is a single-domain Glycoside Hydrolase family 44 (GH44) enzyme (see more details at www.cazy.org). The protein is supplied in a solution containing 35 mM NaHepes buffer (pH 7.5), 750 mM NaCl, 200 mM Imidazole, 3.5 mM CaCl₂, and 25% (v/v) glycerol, at a concentration of 2 mg/mL. Bulk quantities of this product can be made available upon request. To place an order, simply visit our website. We offer fast and secure shipping worldwide.

Electrophoretic Purity

The molecular integrity and purity of CtCel44A (GH44) were evaluated using sodium dodecyl sulfate-polyacrylamide gel electrophoresis (SDS-PAGE), followed by BlueSafe staining (MB15201) (Figure 1).

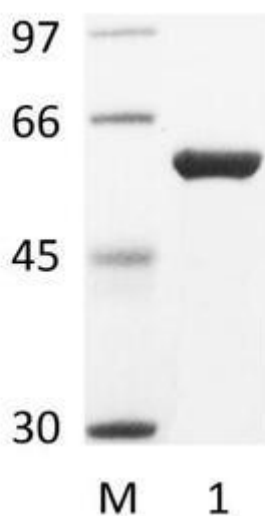


Figure 1. SDS-PAGE analysis of CtCel44A (GH44) was conducted in (Lane 1), employing a 14% polyacrylamide gel. The enzyme exhibits a band corresponding to a molecular weight of approximately 58,11 kDa. Lane M contains a Protein Marker for reference.

Storage temperature

The protein should be stored at -30°C to -15°C in a constant temperature freezer. The protein will remain stable till the expiry date if stored as specified.

Substrate specificity

CtCel44A (GH44) hydrolyses CMC, β -glucan and xyloglucan with similar efficiencies.

Temperature and pH optima

The enzyme exhibits optimal activity within a pH range of 4.0-6.0 and at a temperature of 70°C. Maximal enzymatic activity is achieved at pH 5 and a consistent temperature of 70°C.

Specific activity

CtCel44A (GH44) specific activity is 150 U/mg, using barley β -glucan as substrate.

Enzyme activity

Substrate specificity and kinetic properties of CtCel44A (GH44) are detailed in the referenced publication provided below. To perform enzyme assays and determine specific activity values, adhere to the methodology outlined in the cited paper(s).

Reference

Najmudin *et al.* (2006) J. Biol. Chem. 281, 8815-8828.

Kitago *et al.* (2007) J Biol Chem. 282(49):35703-35711.

Customer Support

Our dedicated customer support team is always ready to assist you with any questions or technical issues you may have. Reach us via email at info@nzytech.com.

Quality control assay

Protein purity is determined to be $\geq 90\%$, as assessed by SDS-PAGE and subsequent BlueSafe staining (MB15201).

For life science research only. Not for use in diagnostic procedures.

NZYtech Lda. Estrada do Paço do Lumiar, Campus do Lumiar - Edifício E, R/C, 1649-038 Lisboa, Portugal Tel.:+351.213643514 Fax:
+351.217151168 www.nzytech.com