

## Lichenase 16A, *Clostridium thermocellum*

### CtLic16A (GH16)

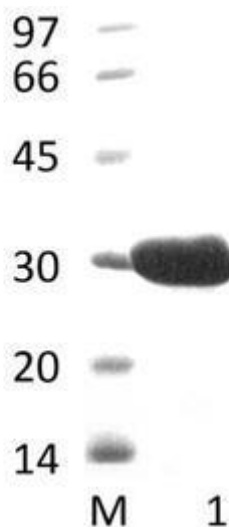
Catalogue number	Presentation
CZ00151	1.5 mg
CZ00152	3 x 1.5 mg

#### Description

Lichenase 16A (CtLic16A), assigned the E.C. number 3.2.1.73, is a derivative of *Clostridium thermocellum*. It is an endo-1,3-1,4- $\beta$ -glucanase. The recombinant CtLic16A, purified from *Escherichia coli*, is a single-domain Glycoside Hydrolase family 16 (GH16) enzyme (see more details at [www.cazy.org](http://www.cazy.org)). The protein is supplied in a solution containing 35 mM NaHepes buffer (pH 7.5), 750 mM NaCl, 200 mM Imidazole, 3.5 mM CaCl<sub>2</sub>, and 25% (v/v) glycerol, at a concentration of 1.5 mg/mL. Bulk quantities of this product can be made available upon request. To place an order, simply visit our website. We offer fast and secure shipping worldwide.

#### Electrophoretic Purity

The molecular integrity and purity of CtLic16A (GH16) were evaluated using sodium dodecyl sulfate-polyacrylamide gel electrophoresis (SDS-PAGE), followed by BlueSafe staining (MB15201) (Figure 1).



**Figure 1.** SDS-PAGE analysis of CtLic16A (GH16) was conducted in (Lane 1), employing a 14% polyacrylamide gel. The enzyme exhibits a band corresponding to a molecular weight of approximately 26,87 kDa. Lane M contains a Protein Marker for reference.

#### Storage temperature

The protein should be stored at -30°C to -15°C in a constant temperature freezer. The protein will remain stable till the expiry date if stored as specified.

#### Substrate specificity

CtLic16A (GH16) hydrolyses 1,3-1,4- $\beta$ -glucans.

#### Temperature and pH optima

The pH optimum for enzymatic activity is 8.5 while temperature optimum is 70 °C.

### Specific activity

CtLic16A (GH16) specific activity is 9000 U/mg, using barley  $\beta$ -glucan as substrate.

### Enzyme activity

Substrate specificity and kinetic properties of CtLic16A (GH16) are detailed in the referenced publication provided below. To perform enzyme assays and determine specific activity values, adhere to the methodology outlined in the cited paper(s).

### Reference

Zverlov and Velikodvorskaya. (1990) Biotechnology Letters. 12(11):811–816.

### Customer Support

Our dedicated customer support team is always ready to assist you with any questions or technical issues you may have. Reach us via email at [info@nzytech.com](mailto:info@nzytech.com).

### Quality control assay

Protein purity is determined to be  $\geq 90\%$ , as assessed by SDS-PAGE and subsequent BlueSafe staining (MB15201).

For life science research only. Not for use in diagnostic procedures.