

Cellobiohydrolase 48A, *Clostridium cellulolyticum*

CcCbh48A (GH48)

Catalogue number	Presentation
CZ00171	1 mg
CZ00172	3 x 1 mg

Description

Cellobiohydrolase 48A (CcCbh48A), assigned the E.C. number 3.2.1.91, is a derivative of *Clostridium cellulolyticum*. It is an exo-1,4- β -glucanase. The recombinant CcCbh48A, purified from *Escherichia coli*, is a single-domain Glycoside Hydrolase family 48 (GH48) enzyme (see more details at www.cazy.org). The protein is supplied in a solution containing 35 mM NaHepes buffer (pH 7.5), 750 mM NaCl, 200 mM Imidazole, 3.5 mM CaCl₂, and 25% (v/v) glycerol, at a concentration of 1 mg/mL. Bulk quantities of this product can be made available upon request. To place an order, simply visit our website. We offer fast and secure shipping worldwide.

Electrophoretic Purity

The molecular integrity and purity of CcCbh48A (GH48) were evaluated using sodium dodecyl sulfate-polyacrylamide gel electrophoresis (SDS-PAGE), followed by BlueSafe staining (MB15201) (Figure 1).

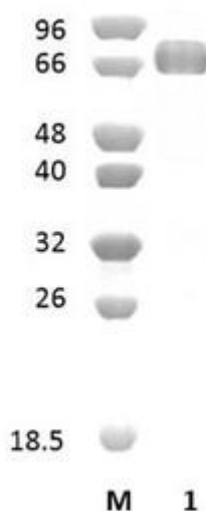


Figure 1. SDS-PAGE analysis of CcCbh48A (GH48) was conducted in (Lane 1), employing a 14% polyacrylamide gel. The enzyme exhibits a band corresponding to a molecular weight of approximately 78,81 kDa. Lane M contains a Protein Marker for reference.

Storage temperature

The protein should be stored at -30°C to -15°C in a constant temperature freezer. The protein will remain stable till the expiry date if stored as specified.

Substrate specificity

CcCbh48A (GH48) hydrolyses phosphoric acid-swollen cellulose, Avicel and others forms of insoluble cellulose.

Temperature and pH optima

The enzyme exhibits optimal activity within a pH range of 5.5-6.5 and at a temperature of 37°C. Maximal enzymatic activity is achieved at pH 6 and a consistent temperature of 37°C.

Specific activity

CcCbh48A (GH48) specific activity is 330 U/mg, using phosphoric acid-swollen cellulose as substrate.

Enzyme activity

Substrate specificity and kinetic properties of CcCbh48A (GH48) are detailed in the referenced publication provided below. To perform enzyme assays and determine specific activity values, adhere to the methodology outlined in the cited paper(s).

Reference

Reverbel-Leroy *et al.* (1996) *Microbiology* 142:1013-1023.

Parsiegla *et al.* (1998) *EMBO J.* 17(19):5551-5562.

Parsiegla *et al.* (2008) *J Mol Biol.* 375(2):499-510.

Customer Support

Our dedicated customer support team is always ready to assist you with any questions or technical issues you may have. Reach us via email at info@nzytech.com.

Quality control assay

Protein purity is determined to be $\geq 90\%$, as assessed by SDS-PAGE and subsequent BlueSafe staining (MB15201).

For life science research only. Not for use in diagnostic procedures.