

# Carbohydrate Binding Module 3A, *Clostridium thermocellum* (CBM3)

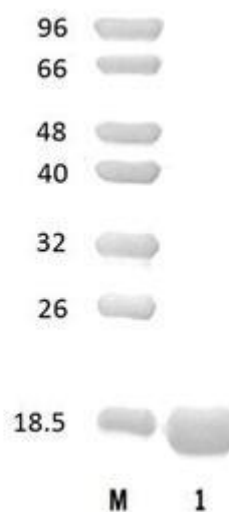
Catalogue number	Presentation
CZ00411	3 mg
CZ00412	3 x 3 mg

## Description

Carbohydrate Binding Module 3A (CBM3) is a Carbohydrate Binding Protein originating from *Clostridium thermocellum*. The recombinant CBM3, purified from *Escherichia coli*, is a single-domain protein belonging to the Carbohydrate Binding Module family 3 (CBM3, see more details at [www.cazy.org](http://www.cazy.org)). The protein is supplied in a solution containing 35 mM NaHepes buffer (pH 7.5), 750 mM NaCl, 200 mM Imidazole, 3.5 mM CaCl<sub>2</sub>, and 25% (v/v) glycerol, at a concentration of 3 mg/mL. Bulk quantities of this product can be made available upon request. To place an order, simply visit our website. We offer fast and secure shipping worldwide.

## Electrophoretic Purity

The molecular integrity and purity of CBM3 were evaluated using sodium dodecyl sulfate-polyacrylamide gel electrophoresis (SDS-PAGE), followed by BlueSafe staining (MB15201) (Figure 1).



**Figure 1.** SDS-PAGE analysis of CBM3 was conducted in (Lane 1), employing a 14% polyacrylamide gel. The enzyme exhibits a band corresponding to a molecular weight of approximately 19,65 kDa. Lane M contains a Protein Marker for reference.

## Storage temperature

The protein should be stored at -30°C to -15°C in a constant temperature freezer. The protein will remain stable till the expiry date if stored as specified.

## Ligand specificity

CBM3 binds to crystalline forms of cellulose. The biochemical properties of CBM3 are detailed in the referenced publication(s) provided below.

## Reference

Lehtio *et al.* (2003) Proc. Natl. Acad. Sci. U S A. 100, 484-489.

Cai *et al.* (2011) J Bacteriol. 193(19): 5199–5206.

## Customer Support

Our dedicated customer support team is always ready to assist you with any questions or technical issues you may have. Reach us via email at [info@nzytech.com](mailto:info@nzytech.com).

## Quality control assay

Protein purity is determined to be  $\geq 90\%$ , as assessed by SDS-PAGE and subsequent BlueSafe staining (MB15201).

For life science research only. Not for use in diagnostic procedures.

---

**NZYtech Lda.** Estrada do Paço do Lumiar, Campus do Lumiar - Edifício E, R/C, 1649-038 Lisboa, Portugal Tel.:+351.213643514 Fax:  
+351.217151168 [www.nzytech.com](http://www.nzytech.com)