

## Galactanase 53A, *Cellvibrio japonicus*

### CjGan53A (GH53)

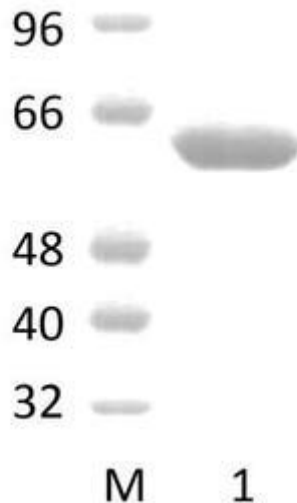
Catalogue number	Presentation
CZ00541	1 mg
CZ00542	3 x 1 mg

#### Description

Galactanase 53A (CjGan53A), assigned the E.C. number 3.2.1.89, is a derivative of *Cellvibrio japonicus*. It is an endo-1,4- $\beta$ -galactanase. The recombinant CjGan53A, purified from *Escherichia coli*, is a single-domain Glycoside Hydrolase family 53 (GH53) enzyme (see more details at [www.cazy.org](http://www.cazy.org)). The protein is supplied in a solution containing 35 mM NaHepes buffer (pH 7.5), 750 mM NaCl, 200 mM Imidazole, 3.5 mM CaCl<sub>2</sub>, and 25% (v/v) glycerol, at a concentration of 1 mg/mL. Bulk quantities of this product can be made available upon request. To place an order, simply visit our website. We offer fast and secure shipping worldwide.

#### Electrophoretic Purity

The molecular integrity and purity of CjGan53A (GH53) were evaluated using sodium dodecyl sulfate-polyacrylamide gel electrophoresis (SDS-PAGE), followed by BlueSafe staining (MB15201) (Figure 1).



**Figure 1.** SDS-PAGE analysis of CjGan53A (GH53) was conducted in (Lane 1), employing a 14% polyacrylamide gel. The enzyme exhibits a band corresponding to a molecular weight of approximately 57,92 kDa. Lane M contains a Protein Marker for reference.

#### Storage temperature

The protein should be stored at -30°C to -15°C in a constant temperature freezer. The protein will remain stable till the expiry date if stored as specified.

#### Substrate specificity

CjGan53A (GH53) hydrolyses 1,4- $\beta$ -galactans.

#### Temperature and pH optima

The enzyme exhibits optimal activity within a pH range of 6.5-8.0 and at a temperature of 60°C. Maximal enzymatic activity is achieved at pH 7.5 and a consistent temperature of 60°C.

### Specific activity

CjGan53A (GH53) specific activity is 300 U/mg, using lupin galactan as substrate.

### Enzyme activity

Substrate specificity and kinetic properties of CjGan53A (GH53) are detailed in the referenced publication provided below. To perform enzyme assays and determine specific activity values, adhere to the methodology outlined in the cited paper(s).

### Reference

Braithwaite *et al.* (1997) *Biochemistry* 36, 15489-15500.

### Customer Support

Our dedicated customer support team is always ready to assist you with any questions or technical issues you may have. Reach us via email at [info@nzytech.com](mailto:info@nzytech.com).

### Quality control assay

Protein purity is determined to be  $\geq 90\%$ , as assessed by SDS-PAGE and subsequent BlueSafe staining (MB15201).

For life science research only. Not for use in diagnostic procedures.