

Carbohydrate Binding Module 13A, *Clostridium thermocellum* (CBM13)

| Catalogue number | Presentation |
|------------------|--------------|
| CZ02841 | 1 mg |
| CZ02842 | 3 x 1 mg |

Description

Carbohydrate Binding Module 13A (CBM13) is a Carbohydrate Binding Protein originating from *Clostridium thermocellum*. The recombinant CBM13, purified from *Escherichia coli*, is a single-domain protein belonging to the Carbohydrate Binding Module family 13 (CBM13, see more details at www.cazy.org). The protein is supplied in a solution containing 35 mM NaHepes buffer (pH 7.5), 750 mM NaCl, 200 mM Imidazole, 3.5 mM CaCl₂, and 25% (v/v) glycerol, at a concentration of 1 mg/mL. Bulk quantities of this product can be made available upon request. To place an order, simply visit our website. We offer fast and secure shipping worldwide.

Electrophoretic Purity

The molecular integrity and purity of CBM13 were evaluated using sodium dodecyl sulfate-polyacrylamide gel electrophoresis (SDS-PAGE), followed by BlueSafe staining (MB15201) (Figure 1).

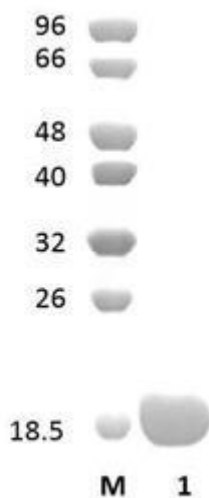


Figure 1. SDS-PAGE analysis of CBM13 was conducted in (Lane 1), employing a 14% polyacrylamide gel. The enzyme exhibits a band corresponding to a molecular weight of approximately 17,75 kDa. Lane M contains a Protein Marker for reference.

Storage temperature

The protein should be stored at -30°C to -15°C in a constant temperature freezer. The protein will remain stable till the expiry date if stored as specified.

Ligand specificity

CBM13 binds to xyloglucan. The biochemical properties of CBM13 are detailed in the referenced publication(s) provided below.

Reference

Jiang *et al.* (2012) J Struct Biol. 180(3):447-57.

Customer Support

Our dedicated customer support team is always ready to assist you with any questions or technical issues you may have. Reach us via email at info@nzytech.com.

Quality control assay

Protein purity is determined to be $\geq 90\%$, as assessed by SDS-PAGE and subsequent BlueSafe staining (MB15201).

For life science research only. Not for use in diagnostic procedures.

NZYtech Lda. Estrada do Paço do Lumiar, Campus do Lumiar - Edifício E, R/C, 1649-038 Lisboa, Portugal Tel.:+351.213643514 Fax:
+351.217151168 www.nzytech.com