

## Acetyl xylan esterase 15A, *Ruminococcus flavefaciens*

### RfAxe15A (CE15)

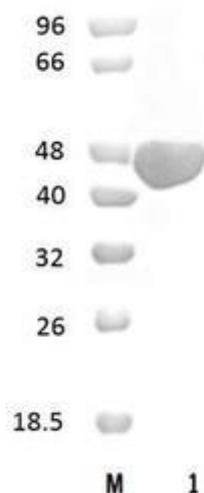
Catalogue number	Presentation
CZ03271	1 mg
CZ03272	3 x 1 mg

#### Description

Acetyl xylan esterase 15A (*RfAxe15A*), assigned the E.C. number 3.1.1.72, is a derivative of *Ruminococcus flavefaciens*. It is an enzyme that participates in the deacetylation of xylans and xylo-oligosaccharides. The recombinant *RfAxe15A*, purified from *Escherichia coli*, is a single-domain Carbohydrate Esterase family 15 (CE15) enzyme (see more details at [www.cazy.org](http://www.cazy.org)). The protein is supplied in a solution containing 35 mM NaHepes buffer (pH 7.5), 750 mM NaCl, 200 mM Imidazole, 3.5 mM CaCl<sub>2</sub>, and 25% (v/v) glycerol, at a concentration of 1 mg/mL. Bulk quantities of this product can be made available upon request. To place an order, simply visit our website. We offer fast and secure shipping worldwide.

#### Electrophoretic Purity

The molecular integrity and purity of *RfAxe15A* (CE15) were evaluated using sodium dodecyl sulfate-polyacrylamide gel electrophoresis (SDS-PAGE), followed by BlueSafe staining (MB15201) (Figure 1).



**Figure 1.** SDS-PAGE analysis of *RfAxe15A* (CE15) was conducted in (Lane 1), employing a 14% polyacrylamide gel. The enzyme exhibits a band corresponding to a molecular weight of approximately 47,78 kDa. Lane M contains a Protein Marker for reference.

#### Storage temperature

The protein should be stored at -30°C to -15°C in a constant temperature freezer. The protein will remain stable till the expiry date if stored as specified.

#### Substrate specificity

*RfAxe15A* (CE15) participates in the de-esterification of acetate groups that decorate acetylated xylan.

#### Temperature and pH optima

The pH optimum for enzymatic activity is 6.8 while temperature optimum is 37 °C.

## Enzyme activity

The substrate specificity and kinetic properties of RfAxe15A (CE15) are detailed in the referenced publication provided below. To perform enzyme assays and determine specific activity values, adhere to the methodology outlined in the cited paper(s).

## Reference

Aurilia *et al.* (2000) Microbiology. 146 (Pt 6):1391-7.

## Customer Support

Our dedicated customer support team is always ready to assist you with any questions or technical issues you may have. Reach us via email at [info@nzytech.com](mailto:info@nzytech.com).

## Quality control assay

Protein purity is determined to be  $\geq 90\%$ , as assessed by SDS-PAGE and subsequent BlueSafe staining (MB15201).

For life science research only. Not for use in diagnostic procedures.

---

**NZYtech Lda.** Estrada do Paço do Lumiar, Campus do Lumiar - Edifício E, R/C, 1649-038 Lisboa, Portugal Tel.:+351.213643514 Fax:  
+351.217151168 [www.nzytech.com](http://www.nzytech.com)