

Carbohydrate Binding Module 64A, *Spirochaeta thermophila* (ZZ-CBM64)

Catalogue number	Presentation
CZ04991	1 mg
CZ04992	3 x 1 mg

Description

Carbohydrate Binding Module 64A (ZZ-CBM64) is a Carbohydrate Binding Protein originating from *Spirochaeta thermophila*. The recombinant ZZ-CBM64, purified from *Escherichia coli*, is a modular protein belonging to the Carbohydrate Binding Module family 64 (CBM64, see more details at www.cazy.org) with an N-terminal immunoglobulin G (IgG) binding ZZ domain of protein A from *Staphylococcus aureus*. The protein is supplied in a solution containing 35 mM NaHepes buffer (pH 7.5), 750 mM NaCl, 200 mM Imidazole, 3.5 mM CaCl₂ and 3.2 M ammonium sulphate, at a concentration of 1 mg/mL. Bulk quantities of this product can be made available upon request. To place an order, simply visit our website. We offer fast and secure shipping worldwide.

Electrophoretic Purity

The molecular integrity and purity of ZZ-CBM64 were evaluated using sodium dodecyl sulfate-polyacrylamide gel electrophoresis (SDS-PAGE), followed by BlueSafe staining (MB15201) (Figure 1).

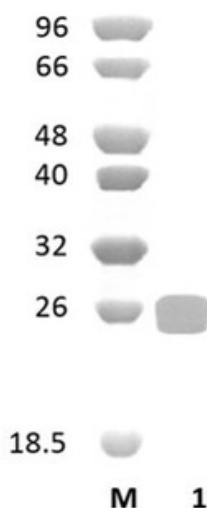


Figure 1. SDS-PAGE analysis of ZZ-CBM64 was conducted in (Lane 1), employing a 14% polyacrylamide gel. The enzyme exhibits a band corresponding to a molecular weight of approximately 25,22 kDa. Lane M contains a Protein Marker for reference.

Storage temperature

The protein should be stored at 2°C to 8°C in a constant temperature. The protein will remain stable till the expiry date if stored as specified.

Ligand specificity

ZZ-CBM64 binds to crystalline forms of cellulose. The biochemical properties of ZZ-CBM64 are detailed in the referenced publication(s) provided below.

Assay conditions

For optimal recovery of ZZ-CBM64 activity, carry out the following procedure: centrifuge the necessary volume of the precipitated protein suspension at 13,000 x g for a duration of 5 minutes. Subsequently, decant the ammonium sulphate supernatant and resuspend the resultant pellet in an equivalent volume of solution, comprising 20 mM Tris-HCl (pH 7.5), 20 mM NaCl, and 5 mM CaCl₂. Following resuspension, proceed to the appropriate assay as dictated by your experimental requirements.

Reference

Angelov *et al.* (2010) J Bacteriol. 192(24):6492-6493.

Chen *et al.* (2006) Biotechnol Appl Biochem. 45, 87-92.

Customer Support

Our dedicated customer support team is always ready to assist you with any questions or technical issues you may have. Reach us via email at info@nzytech.com.

Quality control assay

Protein purity is determined to be $\geq 90\%$, as assessed by SDS-PAGE and subsequent BlueSafe staining (MB15201).

For life science research only. Not for use in diagnostic procedures.

NZYtech Lda. Estrada do Paço do Lumiar, Campus do Lumiar - Edifício E, R/C, 1649-038 Lisboa, Portugal Tel.:+351.213643514 Fax:
+351.217151168 www.nzytech.com