

Carbohydrate Binding Module 66A, *Bacillus subtilis* (CBM66)

Catalogue number	Presentation
CZ05071	0.5 mg
CZ05072	3 x 0.5 mg

Description

Carbohydrate Binding Module 66A (CBM66) is a Carbohydrate Binding Protein originating from *Bacillus subtilis*. The recombinant CBM66, purified from *Escherichia coli*, is a single-domain protein belonging to the Carbohydrate Binding Module family 66 (CBM66, see more details at www.cazy.org). The protein is supplied in a solution containing 35 mM NaHepes buffer (pH 7.5), 750 mM NaCl, 200 mM Imidazole, 3.5 mM CaCl₂, and 25% (v/v) glycerol, at a concentration of 0.5 mg/mL. Bulk quantities of this product can be made available upon request. To place an order, simply visit our website. We offer fast and secure shipping worldwide.

Electrophoretic Purity

The molecular integrity and purity of CBM66 were evaluated using sodium dodecyl sulfate-polyacrylamide gel electrophoresis (SDS-PAGE), followed by BlueSafe staining (MB15201) (Figure 1).

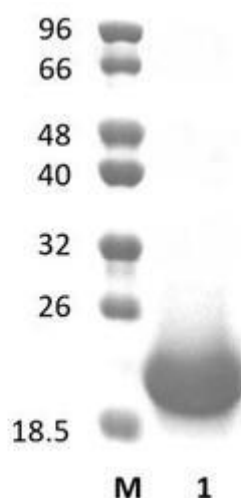


Figure 1. SDS-PAGE analysis of CBM66 was conducted in (Lane 1), employing a 14% polyacrylamide gel. The enzyme exhibits a band corresponding to a molecular weight of approximately 20,23 kDa. Lane M contains a Protein Marker for reference.

Storage temperature

The protein should be stored at -30°C to -15°C in a constant temperature freezer. The protein will remain stable till the expiry date if stored as specified.

Ligand specificity

CBM66 binds to fructans. The biochemical properties of CBM66 are detailed in the referenced publication(s) provided below.

Reference

Cuskin *et al.* (2012) Proc Natl Acad Sci U S A. 109(51):20889-94.

PDB/3D code: 4AZZ[A,B], 4B1L[A], 4B1M[A,B,C].

Customer Support

Our dedicated customer support team is always ready to assist you with any questions or technical issues you may have. Reach us via email at info@nzytech.com.

Quality control assay

Protein purity is determined to be $\geq 90\%$, as assessed by SDS-PAGE and subsequent BlueSafe staining (MB15201).

For life science research only. Not for use in diagnostic procedures.

NZYtech Lda. Estrada do Paço do Lumiar, Campus do Lumiar - Edifício E, R/C, 1649-038 Lisboa, Portugal Tel.:+351.213643514 Fax:
+351.217151168 www.nzytech.com