

Feruloyl esterase 1A, *Zunongwangia profunda*

ZpFae1A (CE1)

Catalogue number	Presentation
CZ05861	1 mg
CZ05862	3 x 1 mg

Description

Feruloyl esterase 1A (ZpFae1A), assigned the E.C. number 3.1.1.73, is a derivative of *Zunongwangia profunda*. It catalyzes the hydrolysis of ester linkages present in hydroxycinnamic acids (including ferulic acid and p-coumaric acid) and diferulates (diFAs) found within plant cell walls. The enzyme's ability extends beyond the deconstruction of plant biomass, wherein it disconnects hemicellulose from lignin, facilitating the synthesis of a broad spectrum of novel bioactive components. These components have potential applications across a variety of industries, including food, cosmetics, and pharmaceuticals. The recombinant ZpFae1A, purified from *Escherichia coli*, is a single-domain Carbohydrate Esterase family 1 (CE1) enzyme (see more details at www.cazy.org). The protein is supplied in a solution containing 35 mM NaHepes buffer (pH 7.5), 750 mM NaCl, 200 mM Imidazole, 3.5 mM CaCl₂, and 25% (v/v) glycerol, at a concentration of 1 mg/mL. Bulk quantities of this product can be made available upon request. To place an order, simply visit our website. We offer fast and secure shipping worldwide.

Electrophoretic Purity

The molecular integrity and purity of ZpFae1A (CE1) were evaluated using sodium dodecyl sulfate-polyacrylamide gel electrophoresis (SDS-PAGE), followed by BlueSafe staining (MB15201) (Figure 1).

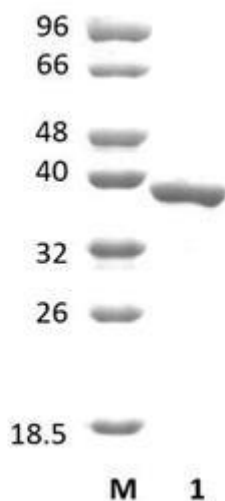


Figure 1. SDS-PAGE analysis of ZpFae1A (CE1) was conducted in (Lane 1), employing a 14% polyacrylamide gel. The enzyme exhibits a band corresponding to a molecular weight of approximately 37,92 kDa. Lane M contains a Protein Marker for reference.

Storage temperature

The protein should be stored at -30°C to -15°C in a constant temperature freezer. The protein will remain stable till the expiry date if stored as specified.

Substrate specificity

ZpFae1A (CE1) participates in the de-esterification of ferulate crosslinks between hemicelluloses and lignin.

Temperature and pH optima

The enzyme exhibits optimal activity within a pH range of 7.0-9.0 and at a temperature of 37°C. Maximal enzymatic activity is achieved at pH 8 and a consistent temperature of 37°C.

Specific activity

The specific activity of ZpFae1A (CE1) was determined against pNP-Ferulate (pNPF) (6 mM), methyl ferulate (MFA), methyl caffeate (MCA), methyl sinapate (MSA) and methyl p-coumarate (MpCA) (12mM), under standard conditions (37 °C in 0.1 M of sodium phosphate buffer, pH 8.0) spectrophotometrically at 410 nm (pNPF) or 340 nm (other substrates). One unit of enzyme activity (1 U) is defined as the amount of enzyme required to release 1 µmol of product, per min, under standard conditions. The specific activity of ZpFae1A (CE1) is denoted as 1.70 U/mg for pNPF, 1.15 U/mg for MFA, 0.18 U/mg for MCA and 1.61 U/mg for MSA. This enzyme does not display lipase or tannase activity.

Customer Support

Our dedicated customer support team is always ready to assist you with any questions or technical issues you may have. Reach us via email at info@nzytech.com.

Quality control assay

Protein purity is determined to be ≥90%, as assessed by SDS-PAGE and subsequent BlueSafe staining (MB15201).

For life science research only. Not for use in diagnostic procedures.