

Peptidoglycan lytic exotransglycosylase 23A, *Bacillus subtilis*

BsMlt23A (GH23)

Catalogue number	Presentation
CZ06961	0.25 mg
CZ06962	3 x 0.25 mg

Description

Peptidoglycan lytic exotransglycosylase 23A (BsMlt23A), assigned the E.C. number 4.2.2.n1, is a derivative of *Bacillus subtilis*. It is an enzyme that participates in the exolytic cleavage of the 1-4- β -glycosidic linkage between N-acetylmuramic acid (MurNAc) and N-acetylglucosamine (GlcNAc) residues in peptidoglycan, from either the reducing or the non-reducing ends of the peptidoglycan chains, with concomitant formation of a 1,6-anhydrobond in the MurNAc residue. The recombinant BsMlt23A, purified from *Escherichia coli*, is a single-domain Glycoside Hydrolase family 23 (GH23) enzyme (see more details at www.cazy.org). The protein is supplied in a solution containing 35 mM NaHepes buffer (pH 7.5), 750 mM NaCl, 200 mM Imidazole, 3.5 mM CaCl₂, and 25% (v/v) glycerol, at a concentration of 0.25 mg/mL. Bulk quantities of this product can be made available upon request. To place an order, simply visit our website. We offer fast and secure shipping worldwide.

Electrophoretic Purity

The molecular integrity and purity of BsMlt23A (GH23) were evaluated using sodium dodecyl sulfate-polyacrylamide gel electrophoresis (SDS-PAGE), followed by BlueSafe staining (MB15201) (Figure 1).

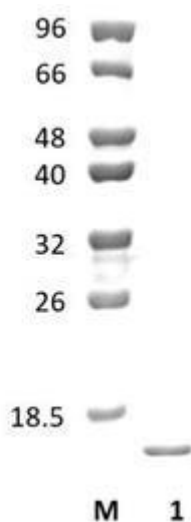


Figure 1. SDS-PAGE analysis of BsMlt23A (GH23) was conducted in (Lane 1), employing a 14% polyacrylamide gel. The enzyme exhibits a band corresponding to a molecular weight of approximately 15,5 kDa. Lane M contains a Protein Marker for reference.

Storage temperature

The protein should be stored at -30°C to -15°C in a constant temperature freezer. The protein will remain stable till the expiry date if stored as specified.

Substrate specificity

BsMlt23A (GH23) hydrolyses N-acetylated glycan.

Temperature and pH optima

The enzyme exhibits optimal activity within a pH range of 6.0-6.5 and at a temperature of 37-40°C. Maximal enzymatic activity is achieved at pH 6 and a consistent temperature of 37°C.

Enzyme activity

The substrate specificity and kinetic properties of BsMlt23A (GH23) are detailed in the referenced publication provided below. To perform enzyme assays and determine specific activity values, adhere to the methodology outlined in the cited paper(s).

Reference

Sudiarta *et al.* (2010) Biochem Biophys Res Commun. 398(3):606-12.

Customer Support

Our dedicated customer support team is always ready to assist you with any questions or technical issues you may have. Reach us via email at info@nzytech.com.

Quality control assay

Protein purity is determined to be ≥90%, as assessed by SDS-PAGE and subsequent BlueSafe staining (MB15201).

For life science research only. Not for use in diagnostic procedures.

NZYtech Lda. Estrada do Paço do Lumiar, Campus do Lumiar - Edifício E, R/C, 1649-038 Lisboa, Portugal Tel.: +351.213643514 Fax:
+351.217151168 www.nzytech.com