

Pectin methylesterase 8A, *Ruminiclostridium thermocellum*

RtPme8A (CE8)

Catalogue number	Presentation
CZ07211	0.25 mg
CZ07212	3 x 0.25 mg

Description

Pectin methylesterase 8A (RtPme8A), assigned the E.C. number 3.1.1.11, is a derivative of *Ruminiclostridium thermocellum*. It is an enzyme that removes the methyl side chains of pectins. The recombinant RtPme8A, purified from *Escherichia coli*, is a single-domain Carbohydrate Esterase family 8 (CE8) enzyme (see more details at www.cazy.org). The protein is supplied in a solution containing 35 mM NaHepes buffer (pH 7.5), 750 mM NaCl, 200 mM Imidazole, 3.5 mM CaCl₂, and 25% (v/v) glycerol, at a concentration of 0.25 mg/mL. Bulk quantities of this product can be made available upon request. To place an order, simply visit our website. We offer fast and secure shipping worldwide.

Electrophoretic Purity

The molecular integrity and purity of RtPme8A (CE8) were evaluated using sodium dodecyl sulfate-polyacrylamide gel electrophoresis (SDS-PAGE), followed by BlueSafe staining (MB15201) (Figure 1).

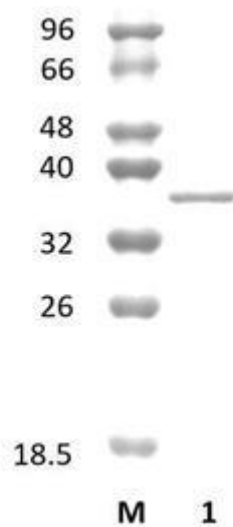


Figure 1. SDS-PAGE analysis of RtPme8A (CE8) was conducted in (Lane 1), employing a 14% polyacrylamide gel. The enzyme exhibits a band corresponding to a molecular weight of approximately 35,37 kDa. Lane M contains a Protein Marker for reference.

Storage temperature

The protein should be stored at -30°C to -15°C in a constant temperature freezer. The protein will remain stable till the expiry date if stored as specified.

Substrate specificity

RtPme8A (CE8) participates in the de-esterification of citrus pectin.

Temperature and pH optima

The enzyme exhibits optimal activity within a pH range of 8.0-9.0 and at a temperature of 45-70°C. Maximal enzymatic activity is achieved at pH 8.5 and a consistent temperature of 50°C.

Enzyme activity

The substrate specificity and kinetic properties of *RtPme8A* (CE8) are detailed in the referenced publication provided below. To perform enzyme assays and determine specific activity values, adhere to the methodology outlined in the cited paper(s).

Reference

Rajulapati and Goyal. (2017) *Mol Biotechnol*. 59(4-5):128-140.

Customer Support

Our dedicated customer support team is always ready to assist you with any questions or technical issues you may have. Reach us via email at info@nzytech.com.

Quality control assay

Protein purity is determined to be $\geq 90\%$, as assessed by SDS-PAGE and subsequent BlueSafe staining (MB15201).

For life science research only. Not for use in diagnostic procedures.

NZYtech Lda. Estrada do Paço do Lumiar, Campus do Lumiar - Edifício E, R/C, 1649-038 Lisboa, Portugal Tel.: +351.213643514 Fax: +351.217151168 www.nzytech.com