

Oligogalacturonate lyase 22A, *Yersinia enterocolitica*

YeOgl22A (PL22-PL22)

Catalogue number	Presentation
CZ07261	1 mg
CZ07262	3 x 1 mg

Description

Oligogalacturonate lyase 22A (YeOgl22A), assigned the E.C. number 4.2.2.6, is a derivative of *Yersinia enterocolitica*. It is an enzyme that uses a β -elimination mechanism to catalyze the conversion of saturated and unsaturated digalacturonate into monogalacturonate and 4,5-unsaturated monogalacturonate-like molecules. The recombinant YeOgl22A, purified from *Escherichia coli*, is a modular Pectate Lyase family 22 (PL22-PL22) enzyme (see more details at www.cazy.org). The protein is supplied in a solution containing 35 mM NaHepes buffer (pH 7.5), 750 mM NaCl, 200 mM Imidazole, 3.5 mM CaCl₂, and 25% (v/v) glycerol, at a concentration of 1 mg/mL. Bulk quantities of this product can be made available upon request. To place an order, simply visit our website. We offer fast and secure shipping worldwide.

Electrophoretic Purity

The molecular integrity and purity of YeOgl22A (PL22-PL22) were evaluated using sodium dodecyl sulfate-polyacrylamide gel electrophoresis (SDS-PAGE), followed by BlueSafe staining (MB15201) (Figure 1).

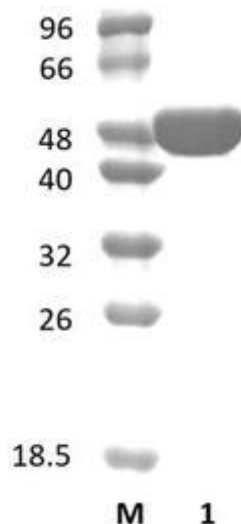


Figure 1. SDS-PAGE analysis of YeOgl22A (PL22-PL22) was conducted in (Lane 1), employing a 14% polyacrylamide gel. The enzyme exhibits a band corresponding to a molecular weight of approximately 46,72 kDa. Lane M contains a Protein Marker for reference.

Storage temperature

The protein should be stored at -30°C to -15°C in a constant temperature freezer. The protein will remain stable till the expiry date if stored as specified.

Substrate specificity

YeOgl22A (PL22-PL22) participates in the eliminative cleavage of saturated and unsaturated digalacturonate (GalA2).

Temperature and pH optima

The enzyme exhibits optimal activity within a pH range of 7.3-7.7 and at a temperature of 37°C. Maximal enzymatic activity is achieved at pH 7.5 and a consistent temperature of 37°C.

Enzyme activity

The substrate specificity and kinetic properties of YeOgl22A (PL22-PL22) are detailed in the referenced publication provided below. To perform enzyme assays and determine specific activity values, adhere to the methodology outlined in the cited paper(s).

Reference

Abbott *et al.* (2010) J Biol Chem. 285(50):39029-38.

Customer Support

Our dedicated customer support team is always ready to assist you with any questions or technical issues you may have. Reach us via email at info@nzytech.com.

Quality control assay

Protein purity is determined to be $\geq 75\%$, as assessed by SDS-PAGE and subsequent BlueSafe staining (MB15201).

For life science research only. Not for use in diagnostic procedures.

NZYtech Lda. Estrada do Paço do Lumiar, Campus do Lumiar - Edifício E, R/C, 1649-038 Lisboa, Portugal Tel.:+351.213643514 Fax:
+351.217151168 www.nzytech.com