

Laminarinase 16C, *Zobellia galactanivorans*

ZgLam16C (GH16-CBM6)

| Catalogue number | Presentation |
|------------------|--------------|
| CZ07571 | 1 mg |
| CZ07572 | 3 x 1 mg |

Description

Laminarinase 16C (ZgLam16C), assigned the E.C. number 3.2.1.39, is a derivative of *Zobellia galactanivorans*. It is an endo-1,3- β -glucanase. The recombinant ZgLam16C, purified from *Escherichia coli*, is a modular Glycoside Hydrolase family 16 (GH16-CBM6) enzyme (see more details at www.cazy.org). The protein is supplied in a solution containing 35 mM NaHepes buffer (pH 7.5), 750 mM NaCl, 200 mM Imidazole, 3.5 mM CaCl₂, and 25% (v/v) glycerol, at a concentration of 1 mg/mL. Bulk quantities of this product can be made available upon request. To place an order, simply visit our website. We offer fast and secure shipping worldwide.

Electrophoretic Purity

The molecular integrity and purity of ZgLam16C (GH16-CBM6) were evaluated using sodium dodecyl sulfate-polyacrylamide gel electrophoresis (SDS-PAGE), followed by BlueSafe staining (MB15201) (Figure 1).

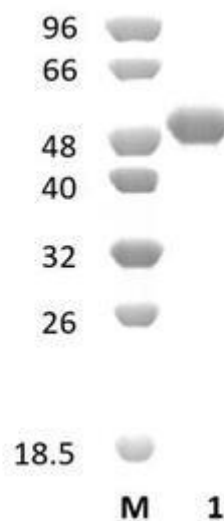


Figure 1. SDS-PAGE analysis of ZgLam16C (GH16-CBM6) was conducted in (Lane 1), employing a 14% polyacrylamide gel. The enzyme exhibits a band corresponding to a molecular weight of approximately 52,74 kDa. Lane M contains a Protein Marker for reference.

Storage temperature

The protein should be stored at -30°C to -15°C in a constant temperature freezer. The protein will remain stable till the expiry date if stored as specified.

Substrate specificity

ZgLam16C (GH16-CBM6) hydrolyses branched laminarin.

Temperature and pH optima

The pH optimum for enzymatic activity is 5 while temperature optimum is 40 °C.

Enzyme activity

The substrate specificity and kinetic properties of ZgLam16C (GH16-CBM6) are detailed in the referenced publication provided below. To perform enzyme assays and determine specific activity values, adhere to the methodology outlined in the cited paper(s).

Reference

Labourel *et al.* (2015) Acta Crystallogr D Biol Crystallogr. 71(Pt 2):173-84.

Customer Support

Our dedicated customer support team is always ready to assist you with any questions or technical issues you may have. Reach us via email at info@nzytech.com.

Quality control assay

Protein purity is determined to be $\geq 90\%$, as assessed by SDS-PAGE and subsequent BlueSafe staining (MB15201).

For life science research only. Not for use in diagnostic procedures.

NZYtech Lda. Estrada do Paço do Lumiar, Campus do Lumiar - Edifício E, R/C, 1649-038 Lisboa, Portugal Tel.:+351.213643514 Fax:
+351.217151168 www.nzytech.com