

## $\beta$ -Glucuronidase 2A, *Sulfolobus solfataricus*

### SsGus2A (GH2)

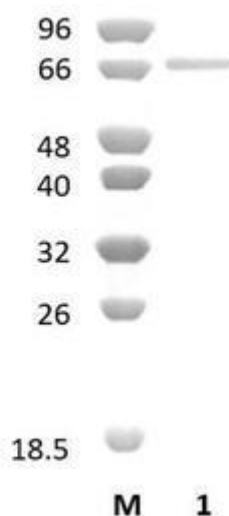
Catalogue number	Presentation
CZ09721	0.25 mg
CZ09722	3 x 0.25 mg

#### Description

$\beta$ -Glucuronidase 2A (SsGus2A), assigned the E.C. number 3.2.1.31, is a derivative of *Sulfolobus solfataricus*. It is a  $\beta$ -glucuronidase. The recombinant SsGus2A, purified from *Escherichia coli*, is a single-domain Glycoside Hydrolase family 2 (GH2) enzyme (see more details at [www.cazy.org](http://www.cazy.org)). The protein is supplied in a solution containing 35 mM NaHepes buffer (pH 7.5), 750 mM NaCl, 200 mM Imidazole, 3.5 mM CaCl<sub>2</sub>, and 25% (v/v) glycerol, at a concentration of 0.25 mg/mL. Bulk quantities of this product can be made available upon request. To place an order, simply visit our website. We offer fast and secure shipping worldwide.

#### Electrophoretic Purity

The molecular integrity and purity of SsGus2A (GH2) were evaluated using sodium dodecyl sulfate-polyacrylamide gel electrophoresis (SDS-PAGE), followed by BlueSafe staining (MB15201) (Figure 1).



**Figure 1.** SDS-PAGE analysis of SsGus2A (GH2) was conducted in (Lane 1), employing a 14% polyacrylamide gel. The enzyme exhibits a band corresponding to a molecular weight of approximately 68,76 kDa. Lane M contains a Protein Marker for reference.

#### Storage temperature

The protein should be stored at -30°C to -15°C in a constant temperature freezer. The protein will remain stable till the expiry date if stored as specified.

#### Substrate specificity

SsGus2A (GH2) hydrolyses  $\beta$ -glucuronic acid (GlcA) containing carbohydrates to release GlcA and the artificial substrate 4-nitrophenyl- $\beta$ -glucuronide (PNP- $\beta$ -GlcA).

#### Temperature and pH optima

The enzyme exhibits optimal activity within a pH range of 4.5-8.0 and at a temperature of 80°C. Maximal enzymatic activity is achieved at pH 6 and a consistent temperature of 80°C.

## Enzyme activity

The substrate specificity and kinetic properties of SsGus2A (GH2) are detailed in the referenced publication provided below. To perform enzyme assays and determine specific activity values, adhere to the methodology outlined in the cited paper(s).

## Reference

Honarbaksh *et al.* (2012) *Biotechnology and Bioengineering*. 109(7):1881-6.

## Customer Support

Our dedicated customer support team is always ready to assist you with any questions or technical issues you may have. Reach us via email at [info@nzytech.com](mailto:info@nzytech.com).

## Quality control assay

Protein purity is determined to be  $\geq 90\%$ , as assessed by SDS-PAGE and subsequent BlueSafe staining (MB15201).

For life science research only. Not for use in diagnostic procedures.