

α -Glucosidase 31A, *Sulfolobus solfataricus*

SsAgl31A (GH31)

Catalogue number	Presentation
CZ10111	0.25 mg
CZ10112	3 x 0.25 mg

Description

α -Glucosidase 31A (SsAgl31A), assigned the E.C. number 3.2.1.20, is a derivative of *Sulfolobus solfataricus*. It is an α -glucosidase. The recombinant SsAgl31A, purified from *Escherichia coli*, is a single-domain Glycoside Hydrolase family 31 (GH31) enzyme (see more details at www.cazy.org). The protein is supplied in a solution containing 35 mM NaHepes buffer (pH 7.5), 750 mM NaCl, 200 mM Imidazole, 3.5 mM CaCl₂, and 25% (v/v) glycerol, at a concentration of 0.25 mg/mL. Bulk quantities of this product can be made available upon request. To place an order, simply visit our website. We offer fast and secure shipping worldwide.

Electrophoretic Purity

The molecular integrity and purity of SsAgl31A (GH31) were evaluated using sodium dodecyl sulfate-polyacrylamide gel electrophoresis (SDS-PAGE), followed by BlueSafe staining (MB15201) (Figure 1).

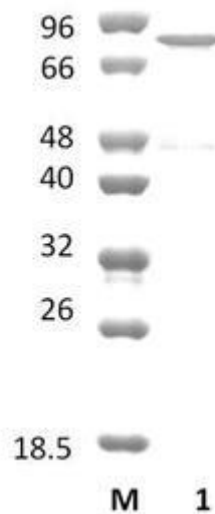


Figure 1. SDS-PAGE analysis of SsAgl31A (GH31) was conducted in (Lane 1), employing a 14% polyacrylamide gel. The enzyme exhibits a band corresponding to a molecular weight of approximately 82,40 kDa. Lane M contains a Protein Marker for reference.

Storage temperature

The protein should be stored at -30°C to -15°C in a constant temperature freezer. The protein will remain stable till the expiry date if stored as specified.

Substrate specificity

SsAgl31A (GH31) hydrolyses maltodextrins, including maltose, glycogen and the artificial substrate 4-nitrophenyl- α -D-glucopyranoside (pNPG).

Temperature and pH optima

The enzyme exhibits optimal activity within a pH range of 4.5-6.0 and at a temperature of 85°C. Maximal enzymatic activity is achieved at pH 5.5 and a consistent temperature of 85°C.

Enzyme activity

The substrate specificity and kinetic properties of SsAgl31A (GH31) are detailed in the referenced publication provided below. To perform enzyme assays and determine specific activity values, adhere to the methodology outlined in the cited paper(s).

Reference

Rolfsmeier *et al.* (1998) J Bacteriol. 180(5):1287–1295.

Customer Support

Our dedicated customer support team is always ready to assist you with any questions or technical issues you may have. Reach us via email at info@nzytech.com.

Quality control assay

Protein purity is determined to be $\geq 50\%$, as assessed by SDS-PAGE and subsequent BlueSafe staining (MB15201).

For life science research only. Not for use in diagnostic procedures.

NZYtech Lda. Estrada do Paço do Lumiar, Campus do Lumiar - Edifício E, R/C, 1649-038 Lisboa, Portugal Tel.:+351.213643514 Fax:
+351.217151168 www.nzytech.com