

## Carbohydrate Binding Module 28A, *Caldicellulosiruptor bescii* (CBM28)

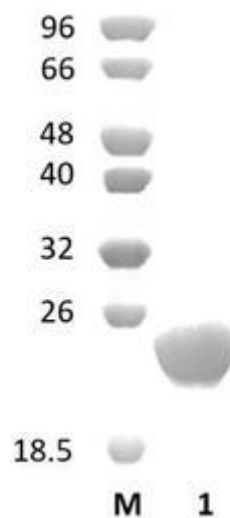
Catalogue number	Presentation
CZ10221	1 mg
CZ10222	3 x 1 mg

### Description

Carbohydrate Binding Module 28A (CBM28) is a Carbohydrate Binding Protein originating from *Caldicellulosiruptor bescii*. The recombinant CBM28, purified from *Escherichia coli*, is a single-domain protein belonging to the Carbohydrate Binding Module family 28 (CBM28, see more details at [www.cazy.org](http://www.cazy.org)). The protein is supplied in a solution containing 35 mM NaHepes buffer (pH 7.5), 750 mM NaCl, 200 mM Imidazole, 3.5 mM CaCl<sub>2</sub>, and 25% (v/v) glycerol, at a concentration of 1 mg/mL. Bulk quantities of this product can be made available upon request. To place an order, simply visit our website. We offer fast and secure shipping worldwide.

### Electrophoretic Purity

The molecular integrity and purity of CBM28 were evaluated using sodium dodecyl sulfate-polyacrylamide gel electrophoresis (SDS-PAGE), followed by BlueSafe staining (MB15201) (Figure 1).



**Figure 1.** SDS-PAGE analysis of CBM28 was conducted in (Lane 1), employing a 14% polyacrylamide gel. The enzyme exhibits a band corresponding to a molecular weight of approximately 23,03 kDa. Lane M contains a Protein Marker for reference.

### Storage temperature

The protein should be stored at -30°C to -15°C in a constant temperature freezer. The protein will remain stable till the expiry date if stored as specified.

### Ligand specificity

CBM28 binds to cellooligosaccharide ligands. The biochemical properties of CBM28 are detailed in the referenced publication(s) provided below.

## Reference

Velikodvorskaya *et al.* (2010) *Appl Environ Microbiol.* 76(24):8071-5.

## Customer Support

Our dedicated customer support team is always ready to assist you with any questions or technical issues you may have. Reach us via email at [info@nzytech.com](mailto:info@nzytech.com).

## Quality control assay

Protein purity is determined to be  $\geq 90\%$ , as assessed by SDS-PAGE and subsequent BlueSafe staining (MB15201).

For life science research only. Not for use in diagnostic procedures.

---

**NZYtech Lda.** Estrada do Paço do Lumiar, Campus do Lumiar - Edifício E, R/C, 1649-038 Lisboa, Portugal Tel.:+351.213643514 Fax:  
+351.217151168 [www.nzytech.com](http://www.nzytech.com)